

**TRUCK
IDENTIFICATION**
Official Used Truck Valuations

Table Of Contents

Truck Types Sketches and descriptions.	TT-1
Cab Styles Sketches and descriptions.	TT-3
Wheel Power Sketches, definition and examples.	TT-3
Engine Model Numbers Breaks down the various components of engine model numbers into meaningful descriptions and definitions.	TT-4 & TT-7
Miscellaneous Definitions Common terms, weights and measurements used in the truck industry.	TT-6
Transmission Model Numbers Breaks down the various components of transmission model numbers into meaningful descriptions.	TT-9
Axle Model Numbers Breaks down the various components of axle model numbers into meaningful descriptions.	TT-10
Vehicle Identification Number Coding Decoding the VIN with full explanation of all data.	TT1-12
Manufacturer Vehicle Identifications and Foreward	2000-VIN-1

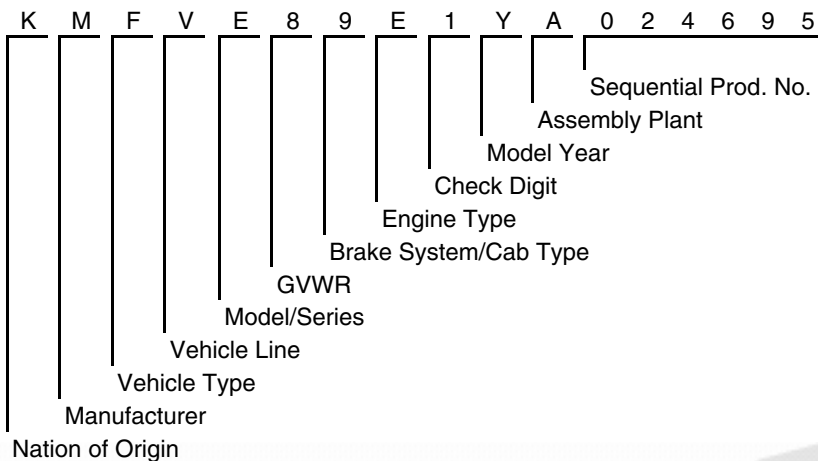
Vehicle Identification Number and Registration Data

Autocar - See Volvo

(Autocar is a model produced by Volvo)

Bering

Vin Structure



Model Years

00 01 02 03 04 05

Vin Position 1	Nation of Origin
K K K	Korea

Vin Position 2	Manufacturer
M M M	HMC (Bering Truck Corporation)

Vin Position 3	Vehicle Type
B B B	Trailer
J J J	Bus
F F F	Truck

Vin Position 4	Vehicle Line
H H H	LD15A
L L L	MD23
P P P	MD26
V V V	HDMX

Vin Position 5	Model/Series
A A A	Cargo
B B B	Chassis Cab
C C C	Mixer
D D D	Dump
E E E	Tractor
F F F	Van